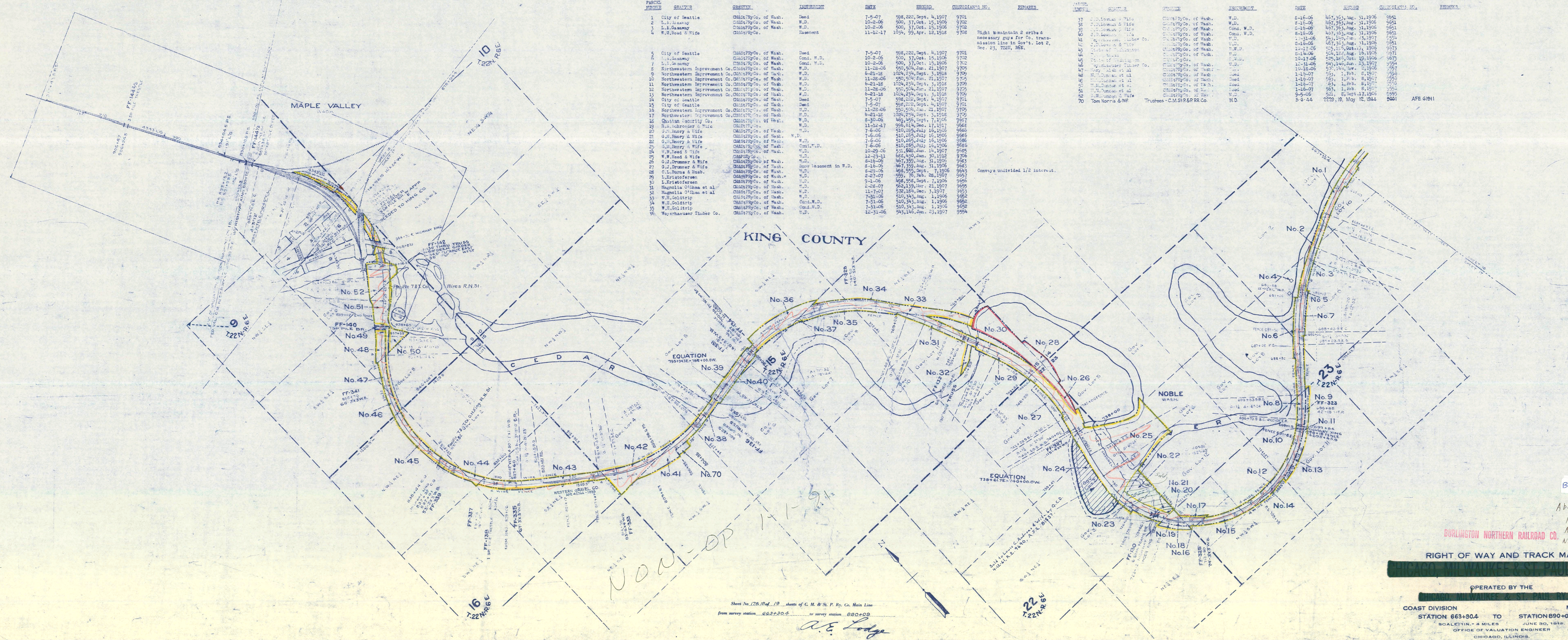


PARCEL NUMBER	GRANTOR	GRANTEE	INSTRUMENT	DATE	BOOK	GRANTOR'S NO.	REMARKS
1	City of Seattle	City of Seattle	Deed	7-5-07	998,222, Sept. 4, 1907	9701	
2	L.A. Gasaway	City of Seattle	W.D.	10-2-06	500, 37, Oct. 15, 1906	9702	
3	L.A. Gasaway	City of Seattle	W.D.	10-2-06	500, 37, Oct. 15, 1906	9702	
4	W.H. Reed & Wife	City of Seattle	Deed	11-12-17	1034, 99, Apr. 12, 1918	9703	Right to maintain 2 crbs & necessary gys for Co. transmission line in Gov't. Lot 2, Sec. 23, T22N, R6E.
5	City of Seattle	City of Seattle	Deed	7-5-07	998,222, Sept. 4, 1907	9701	
6	L.A. Gasaway	City of Seattle	W.D.	10-2-06	500, 37, Oct. 15, 1906	9702	
7	L.A. Gasaway	City of Seattle	W.D.	10-2-06	500, 37, Oct. 15, 1906	9702	
8	Northern Improvement Co.	City of Seattle	W.D.	11-28-06	550, 504, Jan. 21, 1907	9705	
9	Northern Improvement Co.	City of Seattle	W.D.	6-21-18	1024, 214, Sept. 3, 1918	9709	
10	Northern Improvement Co.	City of Seattle	W.D.	11-28-06	550, 504, Jan. 21, 1907	9705	
11	Northern Improvement Co.	City of Seattle	W.D.	6-21-18	1024, 214, Sept. 3, 1918	9709	
12	Northern Improvement Co.	City of Seattle	W.D.	11-28-06	550, 504, Jan. 21, 1907	9705	
13	Northern Improvement Co.	City of Seattle	W.D.	6-21-18	1024, 214, Sept. 3, 1918	9709	
14	City of Seattle	City of Seattle	Deed	7-5-07	998,222, Sept. 4, 1907	9701	
15	City of Seattle	City of Seattle	Deed	7-5-07	998,222, Sept. 4, 1907	9701	
16	Northern Improvement Co.	City of Seattle	W.D.	11-28-06	550, 504, Jan. 21, 1907	9705	
17	Northern Improvement Co.	City of Seattle	W.D.	6-21-18	1024, 214, Sept. 3, 1918	9709	
18	Quinn Security Co.	City of Seattle	W.D.	8-30-06	469, 999, Sept. 7, 1906	9687	
19	H.A. Schreiner & Wife	City of Seattle	W.D.	11-12-17	998,614, Dec. 17, 1917	9688	
20	G.H. Henry & Wife	City of Seattle	W.D.	7-6-06	510, 265, July 16, 1906	9686	
21	G.H. Henry & Wife	City of Seattle	W.D.	7-6-06	510, 265, July 16, 1906	9686	
22	G.H. Henry & Wife	City of Seattle	W.D.	7-6-06	510, 265, July 16, 1906	9686	
23	W.H. Reed & Wife	City of Seattle	W.D.	10-29-06	511, 806, Jan. 14, 1907	9685	
24	W.H. Reed & Wife	City of Seattle	W.D.	10-29-06	511, 806, Jan. 14, 1907	9685	
25	G.J. Drummer & Wife	City of Seattle	W.D.	8-16-06	467, 359, Aug. 31, 1906	9683	
26	G.J. Drummer & Wife	City of Seattle	W.D.	8-16-06	467, 359, Aug. 31, 1906	9683	
27	G.J. Drummer & Wife	City of Seattle	W.D.	8-16-06	467, 359, Aug. 31, 1906	9683	
28	O.L. Burns & Hub.	City of Seattle	W.D.	2-27-07	529, 76, Feb. 28, 1907	9657	Conveys undivided 1/2 interest.
29	L. Kristofersen	City of Seattle	W.D.	9-1-06	498, 558, Sept. 7, 1906	9656	
30	L. Kristofersen	City of Seattle	W.D.	9-1-06	498, 558, Sept. 7, 1906	9656	
31	Magnolia Oil Co. et al.	City of Seattle	W.D.	2-28-07	565, 139, Mar. 21, 1907	9655	
32	Magnolia Oil Co. et al.	City of Seattle	W.D.	11-7-07	576, 188, Dec. 3, 1907	9653	
33	W.H. Goldtrip	City of Seattle	W.D.	7-31-06	510, 343, Aug. 1, 1906	9652	
34	W.H. Goldtrip	City of Seattle	W.D.	7-31-06	510, 343, Aug. 1, 1906	9652	
35	W.H. Goldtrip	City of Seattle	W.D.	7-31-06	510, 343, Aug. 1, 1906	9652	
36	W.H. Goldtrip	City of Seattle	W.D.	12-31-06	943, 146, Jan. 23, 1907	9654	
37	J.D. Bowman & Wife	City of Seattle	W.D.	8-16-06	467, 363, Aug. 31, 1906	9651	
38	J.D. Bowman & Wife	City of Seattle	W.D.	8-16-06	467, 363, Aug. 31, 1906	9651	
39	J.D. Bowman & Wife	City of Seattle	W.D.	8-16-06	467, 363, Aug. 31, 1906	9651	
40	J.D. Bowman & Wife	City of Seattle	W.D.	8-16-06	467, 363, Aug. 31, 1906	9651	
41	J.D. Bowman & Wife	City of Seattle	W.D.	8-16-06	467, 363, Aug. 31, 1906	9651	
42	J.D. Bowman & Wife	City of Seattle	W.D.	8-16-06	467, 363, Aug. 31, 1906	9651	
43	J.D. Bowman & Wife	City of Seattle	W.D.	8-16-06	467, 363, Aug. 31, 1906	9651	
44	J.D. Bowman & Wife	City of Seattle	W.D.	8-16-06	467, 363, Aug. 31, 1906	9651	
45	J.D. Bowman & Wife	City of Seattle	W.D.	8-16-06	467, 363, Aug. 31, 1906	9651	
46	J.D. Bowman & Wife	City of Seattle	W.D.	8-16-06	467, 363, Aug. 31, 1906	9651	
47	J.D. Bowman & Wife	City of Seattle	W.D.	8-16-06	467, 363, Aug. 31, 1906	9651	
48	J.D. Bowman & Wife	City of Seattle	W.D.	8-16-06	467, 363, Aug. 31, 1906	9651	
49	J.D. Bowman & Wife	City of Seattle	W.D.	8-16-06	467, 363, Aug. 31, 1906	9651	
50	J.D. Bowman & Wife	City of Seattle	W.D.	8-16-06	467, 363, Aug. 31, 1906	9651	
51	J.D. Bowman & Wife	City of Seattle	W.D.	8-16-06	467, 363, Aug. 31, 1906	9651	
52	J.D. Bowman & Wife	City of Seattle	W.D.	8-16-06	467, 363, Aug. 31, 1906	9651	
53	J.D. Bowman & Wife	City of Seattle	W.D.	8-16-06	467, 363, Aug. 31, 1906	9651	
54	J.D. Bowman & Wife	City of Seattle	W.D.	8-16-06	467, 363, Aug. 31, 1906	9651	
55	J.D. Bowman & Wife	City of Seattle	W.D.	8-16-06	467, 363, Aug. 31, 1906	9651	
56	J.D. Bowman & Wife	City of Seattle	W.D.	8-16-06	467, 363, Aug. 31, 1906	9651	
57	J.D. Bowman & Wife	City of Seattle	W.D.	8-16-06	467, 363, Aug. 31, 1906	9651	
58	J.D. Bowman & Wife	City of Seattle	W.D.	8-16-06	467, 363, Aug. 31, 1906	9651	
59	J.D. Bowman & Wife	City of Seattle	W.D.	8-16-06	467, 363, Aug. 31, 1906	9651	
60	J.D. Bowman & Wife	City of Seattle	W.D.	8-16-06	467, 363, Aug. 31, 1906	9651	
61	J.D. Bowman & Wife	City of Seattle	W.D.	8-16-06	467, 363, Aug. 31, 1906	9651	
62	J.D. Bowman & Wife	City of Seattle	W.D.	8-16-06	467, 363, Aug. 31, 1906	9651	
63	J.D. Bowman & Wife	City of Seattle	W.D.	8-16-06	467, 363, Aug. 31, 1906	9651	
64	J.D. Bowman & Wife	City of Seattle	W.D.	8-16-06	467, 363, Aug. 31, 1906	9651	
65	J.D. Bowman & Wife	City of Seattle	W.D.	8-16-06	467, 363, Aug. 31, 1906	9651	
66	J.D. Bowman & Wife	City of Seattle	W.D.	8-16-06	467, 363, Aug. 31, 1906	9651	
67	J.D. Bowman & Wife	City of Seattle	W.D.	8-16-06	467, 363, Aug. 31, 1906	9651	
68	J.D. Bowman & Wife	City of Seattle	W.D.	8-16-06	467, 363, Aug. 31, 1906	9651	
69	J.D. Bowman & Wife	City of Seattle	W.D.	8-16-06	467, 363, Aug. 31, 1906	9651	
70	J.D. Bowman & Wife	City of Seattle	W.D.	8-16-06	467, 363, Aug. 31, 1906	9651	

PARCEL NUMBER	GRANTOR	GRANTEE	INSTRUMENT	DATE	BOOK	GRANTOR'S NO.	REMARKS
37	J.D. Bowman & Wife	City of Seattle	W.D.	8-16-06	467, 363, Aug. 31, 1906	9651	
38	J.D. Bowman & Wife	City of Seattle	W.D.	8-16-06	467, 363, Aug. 31, 1906	9651	
39	J.D. Bowman & Wife	City of Seattle	W.D.	8-16-06	467, 363, Aug. 31, 1906	9651	
40	J.D. Bowman & Wife	City of Seattle	W.D.	8-16-06	467, 363, Aug. 31, 1906	9651	
41	J.D. Bowman & Wife	City of Seattle	W.D.	8-16-06	467, 363, Aug. 31, 1906	9651	
42	J.D. Bowman & Wife	City of Seattle	W.D.	8-16-06	467, 363, Aug. 31, 1906	9651	
43	J.D. Bowman & Wife	City of Seattle	W.D.	8-16-06	467, 363, Aug. 31, 1906	9651	
44	J.D. Bowman & Wife	City of Seattle	W.D.	8-16-06	467, 363, Aug. 31, 1906	9651	
45	J.D. Bowman & Wife	City of Seattle	W.D.	8-16-06	467, 363, Aug. 31, 1906	9651	
46	J.D. Bowman & Wife	City of Seattle	W.D.	8-16-06	467, 363, Aug. 31, 1906	9651	
47	J.D. Bowman & Wife	City of Seattle	W.D.	8-16-06	467, 363, Aug. 31, 1906	9651	
48	J.D. Bowman & Wife	City of Seattle	W.D.	8-16-06	467, 363, Aug. 31, 1906	9651	
49	J.D. Bowman & Wife	City of Seattle	W.D.	8-16-06	467, 363, Aug. 31, 1906	9651	
50	J.D. Bowman & Wife	City of Seattle	W.D.	8-16-06	467, 363, Aug. 31, 1906	9651	
51	J.D. Bowman & Wife	City of Seattle	W.D.	8-16-06	467, 363, Aug. 31, 1906	9651	
52	J.D. Bowman & Wife	City of Seattle	W.D.	8-16-06	467, 363, Aug. 31, 1906	9651	
53	J.D. Bowman & Wife	City of Seattle	W.D.	8-16-06	467, 363, Aug. 31, 1906	9651	
54	J.D. Bowman & Wife	City of Seattle	W.D.	8-16-06	467, 363, Aug. 31, 1906	9651	
55	J.D. Bowman & Wife	City of Seattle	W.D.	8-16-06	467, 363, Aug. 31, 1906	9651	
56	J.D. Bowman & Wife	City of Seattle	W.D.	8-16-06	467, 363, Aug. 31, 1906	9651	
57	J.D. Bowman & Wife	City of Seattle	W.D.	8-16-06	467, 363, Aug. 31, 1906	9651	
58	J.D. Bowman & Wife	City of Seattle	W.D.	8-16-06	467, 363, Aug. 31, 1906	9651	
59	J.D. Bowman & Wife	City of Seattle	W.D.	8-16-06	467, 363, Aug. 31, 1906	9651	
60	J.D. Bowman & Wife	City of Seattle	W.D.	8-16-06	467, 363, Aug. 31, 1906	9651	
61	J.D. Bowman & Wife	City of Seattle	W.D.	8-16-06	467, 363, Aug. 31, 1906	9651	
62	J.D. Bowman & Wife	City of Seattle	W.D.	8-16-06	467, 363, Aug. 31, 1906	9651	
63	J.D. Bowman & Wife	City of Seattle	W.D.	8-16-06	467, 363, Aug. 31, 1906	9651	
64	J.D. Bowman & Wife	City of Seattle	W.D.	8-16-06	467, 363, Aug. 31, 1906	9651	
65	J.D. Bowman & Wife	City of Seattle	W.D.	8-16-06	467, 363, Aug. 31, 1906	9651	
66	J.D. Bowman & Wife	City of Seattle	W.D.	8-16-06	467, 363, Aug. 31, 1906	9651	
67	J.D. Bowman & Wife	City of Seattle	W.D.	8-16-06	467, 363, Aug. 31, 1906	9651	
68	J.D. Bowman & Wife	City of Seattle	W.D.	8-16-06	467, 363, Aug. 31, 1906	9651	
69	J.D. Bowman & Wife	City of Seattle	W.D.	8-16-06	467, 363, Aug. 31, 1906	9651	
70	J.D. Bowman & Wife	City of Seattle	W.D.	8-16-06	467, 363, Aug. 31, 1906	9651	



Sheet No. 178 (of 19) sheets of C. M. & St. P. Ry. Co. Main Line
 from survey station 683+20.4 to survey station 830+08
 A.E. Lodge
 Valuation Engineer

BN18-17
 Abandon 90
 Nov 1-1-92
 ABE-221X 91-4-25
 Not notify STATE

BURLINGTON NORTHERN RAILROAD CO.
RIGHT OF WAY AND TRACK MAP

OPERATED BY THE
BURLINGTON NORTHERN RAILROAD CO.

COAST DIVISION MAIN LINE
 STATION 663+30.4 TO STATION 890+09
 SCALE 1" = 4 MILES JUNE 30, 1918
 OFFICE OF VALUATION ENGINEER
 CHICAGO, ILLINOIS.

WASH 178-18